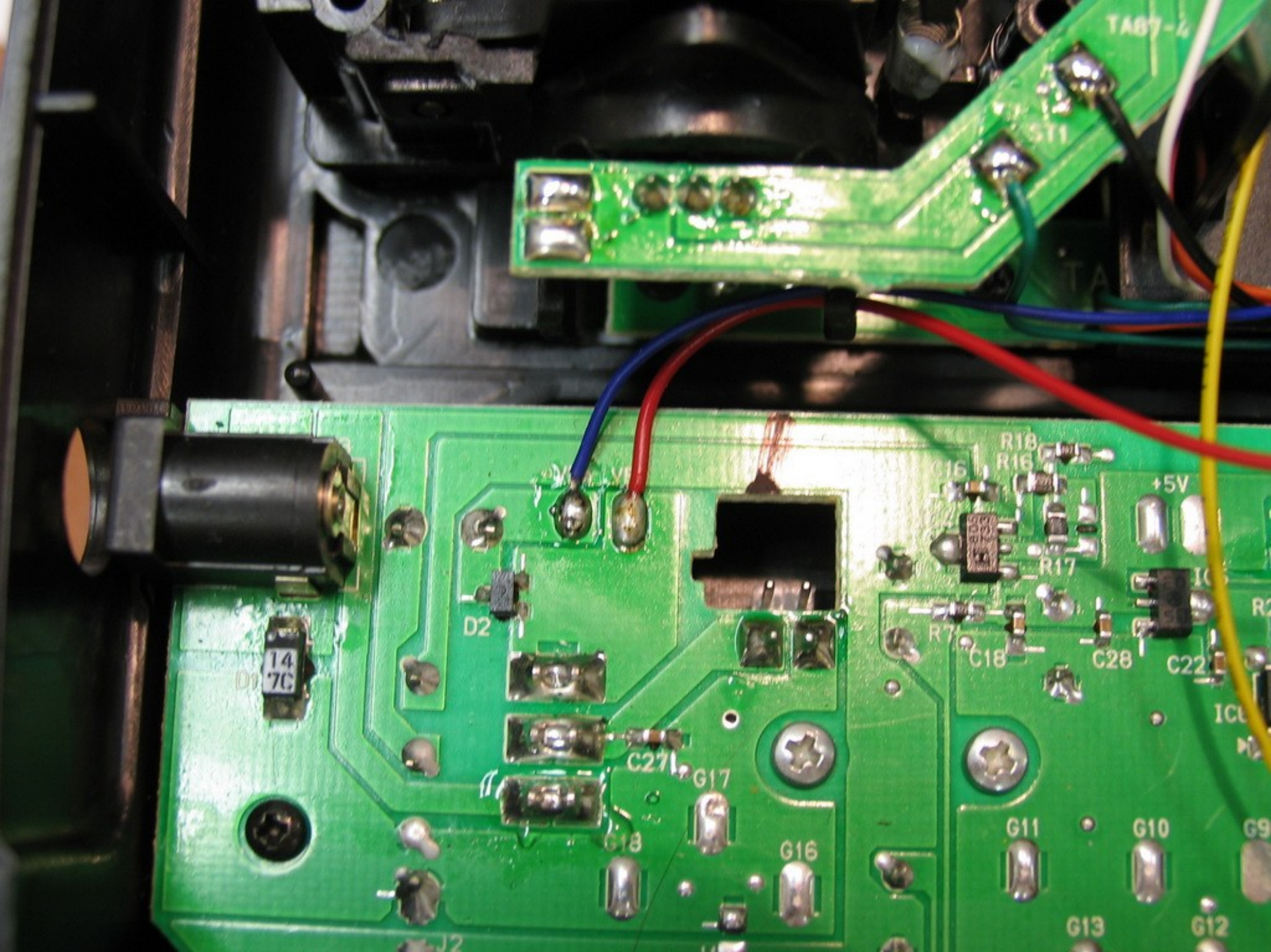


JETI model  
DUPLX  
TRANSMITTER





TAB7-4

ST1

R18

R16

+5V

D2

D1  
14  
7C

IC6

R17

R7

C18

C28

C22

R2

IC

M

C27

G17

G18

G16

G11

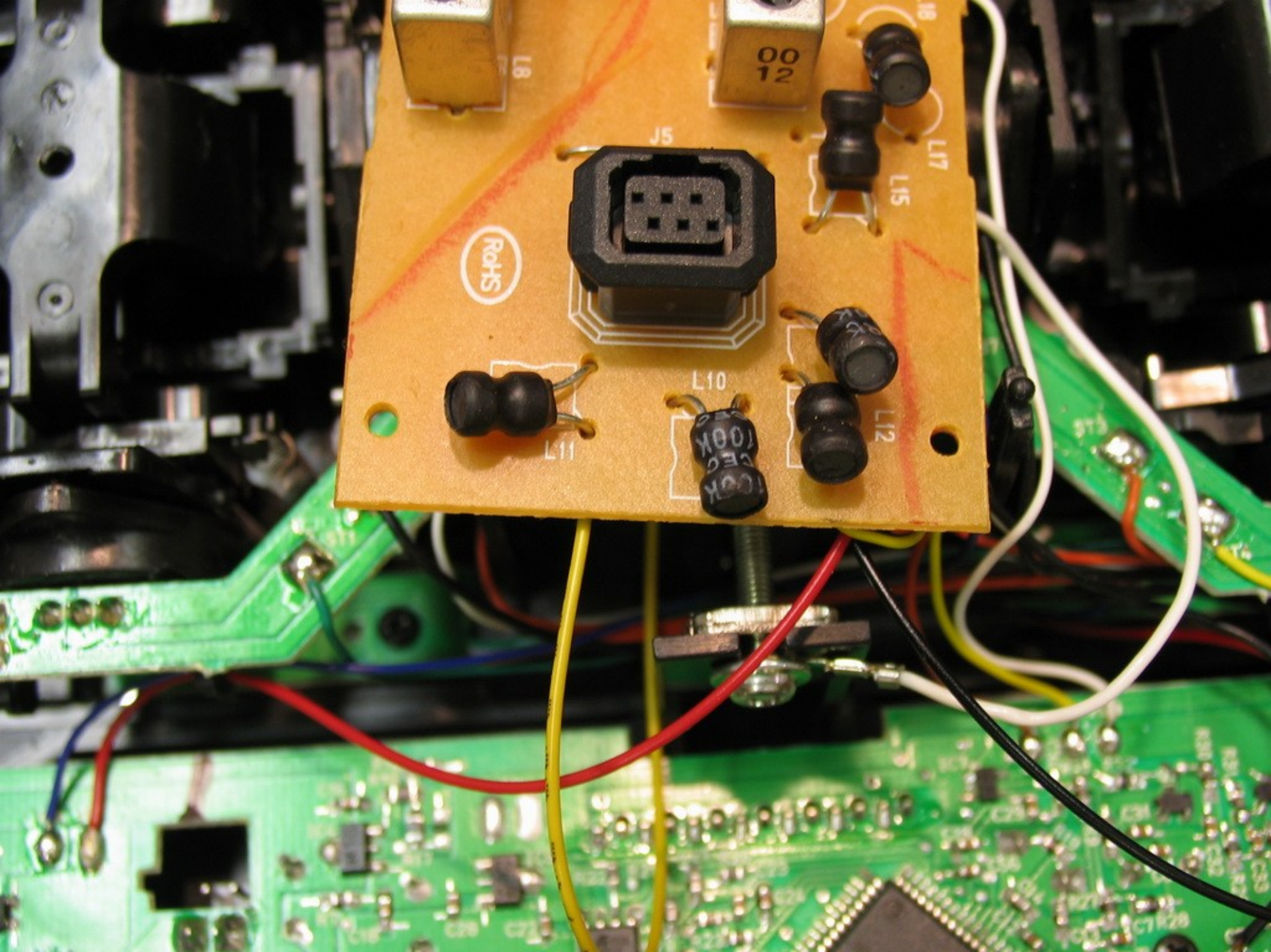
G10

G9

G13

G12

J2



RoHS

00  
12

J5

L8

L17

L15

L10

L12

L11

100K  
CEC  
100K

Power supply 10V UCC3, it supplies VF

GND3 ground vf

MOD impulses for FM

UCC power supply Trainer

GND ground trainer

Input of impulses

PPM signal from encoder to Trainer

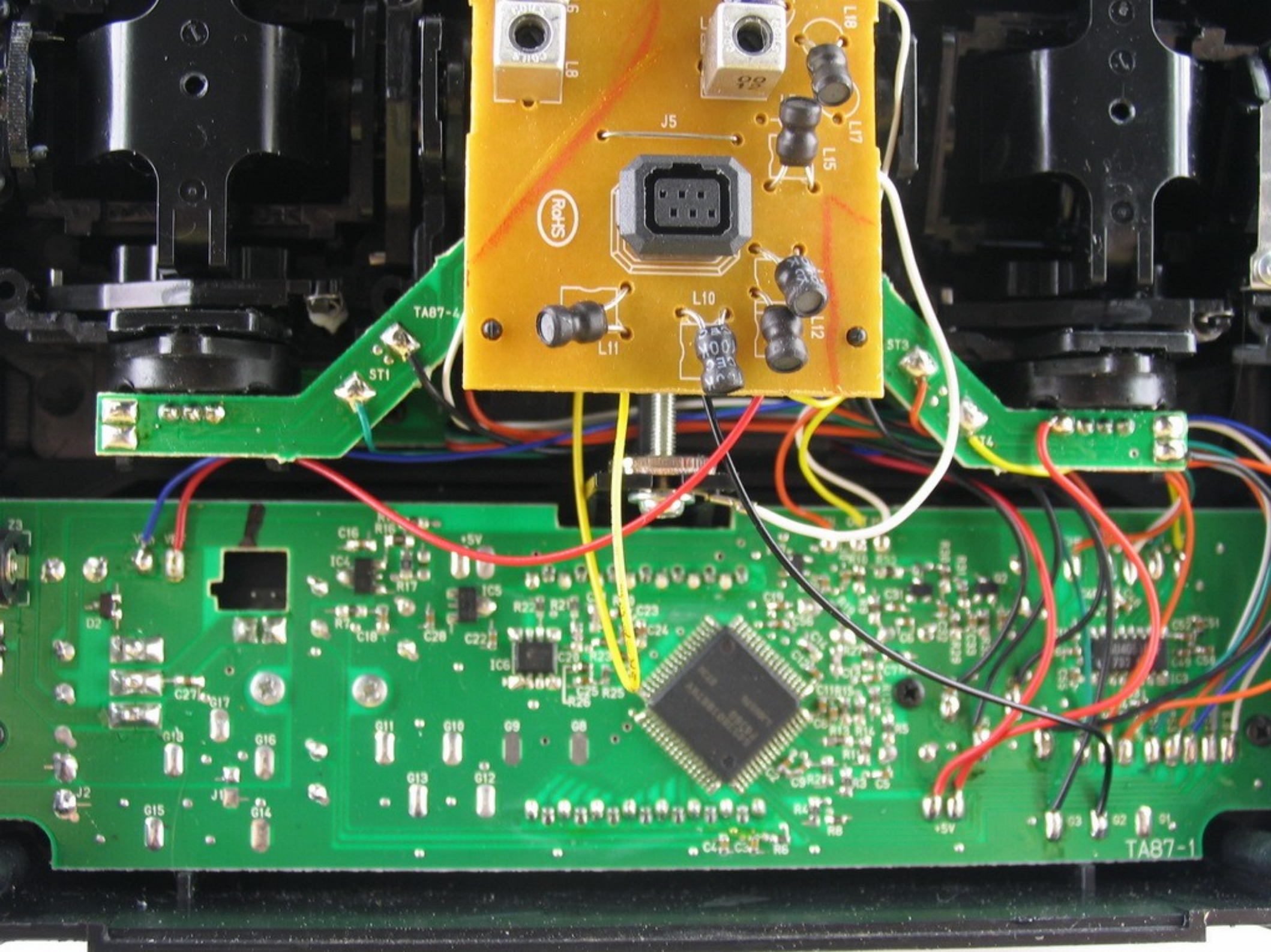
10V UCC3

Выходной VF  
10V UCC3

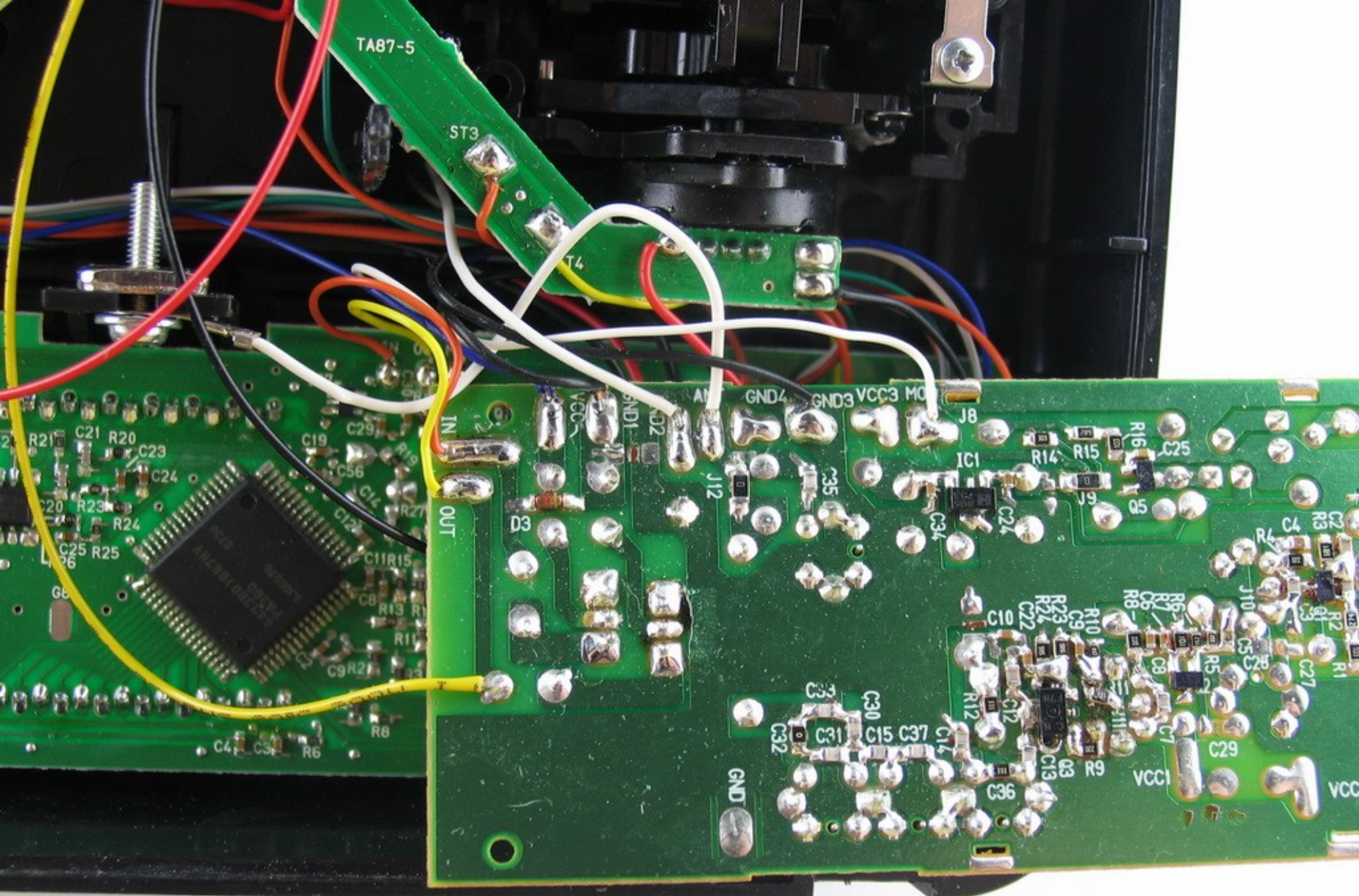
Module  
UCC3











TA87-5

ST3

T4

R21  
C21  
R20  
C23  
C24  
R23  
R24  
C25  
R25  
G6  
C4  
C5  
R6  
R8

C19  
C29  
R19  
C14  
R27  
C12  
C11  
R15  
C8  
R13  
R11  
C9  
R2

VCC  
GND1  
GND2  
AM  
GND4  
GND3  
VCC3  
MO

IN  
OUT  
D3  
J12

J8  
IC1  
R14  
R15  
C25  
Q5  
C34  
C24

R16  
R17  
R18  
R19  
R20  
R21  
R22  
R23  
R24  
R25  
R26  
R27  
R28  
R29  
R30  
R31  
R32  
R33  
R34  
R35  
R36  
R37  
R38  
R39  
R40  
R41  
R42  
R43  
R44  
R45  
R46  
R47  
R48  
R49  
R50

C35  
C36  
C37  
C38  
C39  
C40  
C41  
C42  
C43  
C44  
C45  
C46  
C47  
C48  
C49  
C50  
C51  
C52  
C53  
C54  
C55  
C56  
C57  
C58  
C59  
C60  
C61  
C62  
C63  
C64  
C65  
C66  
C67  
C68  
C69  
C70  
C71  
C72  
C73  
C74  
C75  
C76  
C77  
C78  
C79  
C80  
C81  
C82  
C83  
C84  
C85  
C86  
C87  
C88  
C89  
C90  
C91  
C92  
C93  
C94  
C95  
C96  
C97  
C98  
C99  
C100

J9  
Q5  
C34  
C24  
R14  
R15  
C25  
R16  
R17  
R18  
R19  
R20  
R21  
R22  
R23  
R24  
R25  
R26  
R27  
R28  
R29  
R30  
R31  
R32  
R33  
R34  
R35  
R36  
R37  
R38  
R39  
R40  
R41  
R42  
R43  
R44  
R45  
R46  
R47  
R48  
R49  
R50

J10  
C35  
C36  
C37  
C38  
C39  
C40  
C41  
C42  
C43  
C44  
C45  
C46  
C47  
C48  
C49  
C50  
C51  
C52  
C53  
C54  
C55  
C56  
C57  
C58  
C59  
C60  
C61  
C62  
C63  
C64  
C65  
C66  
C67  
C68  
C69  
C70  
C71  
C72  
C73  
C74  
C75  
C76  
C77  
C78  
C79  
C80  
C81  
C82  
C83  
C84  
C85  
C86  
C87  
C88  
C89  
C90  
C91  
C92  
C93  
C94  
C95  
C96  
C97  
C98  
C99  
C100

J11  
J12  
J13  
J14  
J15  
J16  
J17  
J18  
J19  
J20  
J21  
J22  
J23  
J24  
J25  
J26  
J27  
J28  
J29  
J30  
J31  
J32  
J33  
J34  
J35  
J36  
J37  
J38  
J39  
J40  
J41  
J42  
J43  
J44  
J45  
J46  
J47  
J48  
J49  
J50

GND

VCC1

VCC



