

# OPERATION INSTRUCTIONS OF THE USB ADAPTER



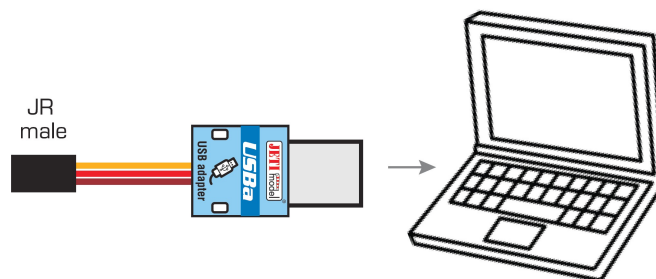
## 1. Introduction

The USB Adapter transfers informations between a PC and the Jeti model products. It is ,in fact, an adaptation means between the PC USB interface and the data connector Ext. with appropriate USB support, provided in Jeti model products. All types of equipment marked with the label symbol USBa are prepared for firmware updates. On internet pages [www.jetimodel.com](http://www.jetimodel.com) you may find informations about actual firmware versions.

## 2. Installation

In cases where your USB Adapter has not been installed yet, start with point 1. If the USB Adapter has already been installed, start with point 3.

1. connect the USB Adapter to the PC USB port (at this stage do not connect any equipment to the USB Adapter yet).

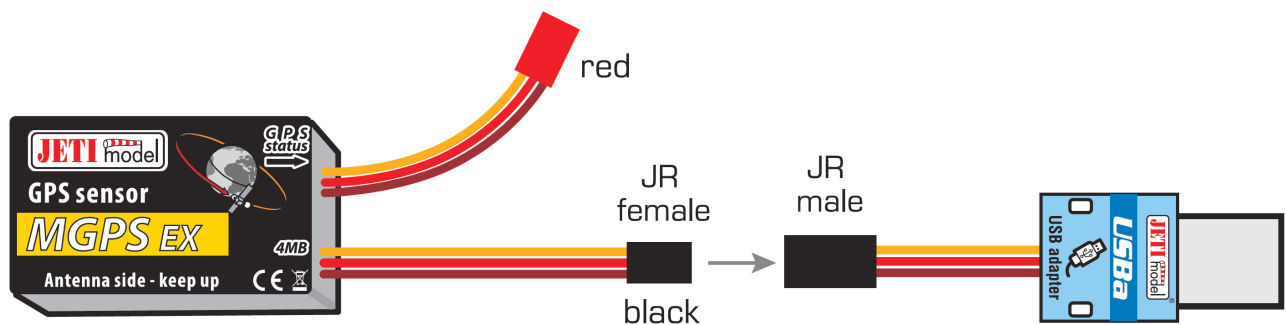


2. install USB Adapter drivers, which you may find on internet pages [www.jetimodel.com](http://www.jetimodel.com) or on following pages: <http://www.ftdichip.com/Drivers/D2XX.htm>. More recent operation systems download and install drivers automatically.

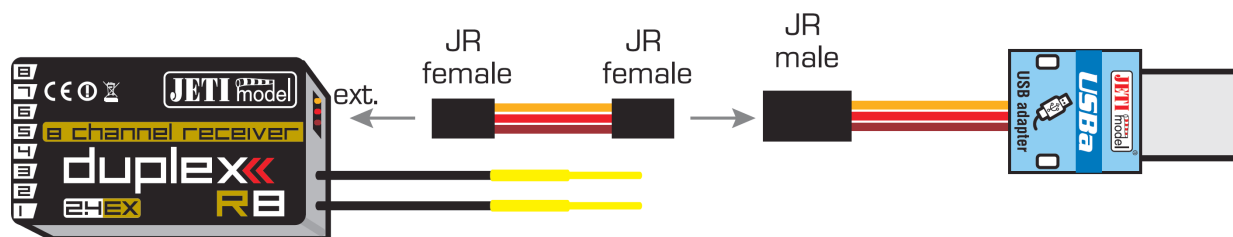
3. download actualized update software from internet pages [www.jetimodel.com](http://www.jetimodel.com)

4. Start firmware update program.

5. Connect the equipment, which you have chosen for updates, to the USB Adapter. The program identifies the connected equipment and asks, whether you wish to start updating.



# OPERATION INSTRUCTIONS OF THE USB ADAPTER



6. updating of the equipment firmware starts with a confirmation.

7. The program announces the update end. Now you may disconnect the equipment from the USB Adapter. This is the genuine actualization phase of the equipment firmware.

## 3. Warranty

For the product we grant a warranty of 24 months from the day of purchase under the assumption that it has been operated in conformity with these instructions at recommended voltages and that it has not been damaged mechanically. Warranty and post warranty service is provided by the manufacturer.

We wish you a successful modeling time: JETI model s.r.o. Příbor, [www.jetimodel.cz](http://www.jetimodel.cz)