

TRIMMER

8040518
314 192

8040518
314 192

2.4 ON | FM ON

JETI model

DUPLEX

2.4 GHz

TU

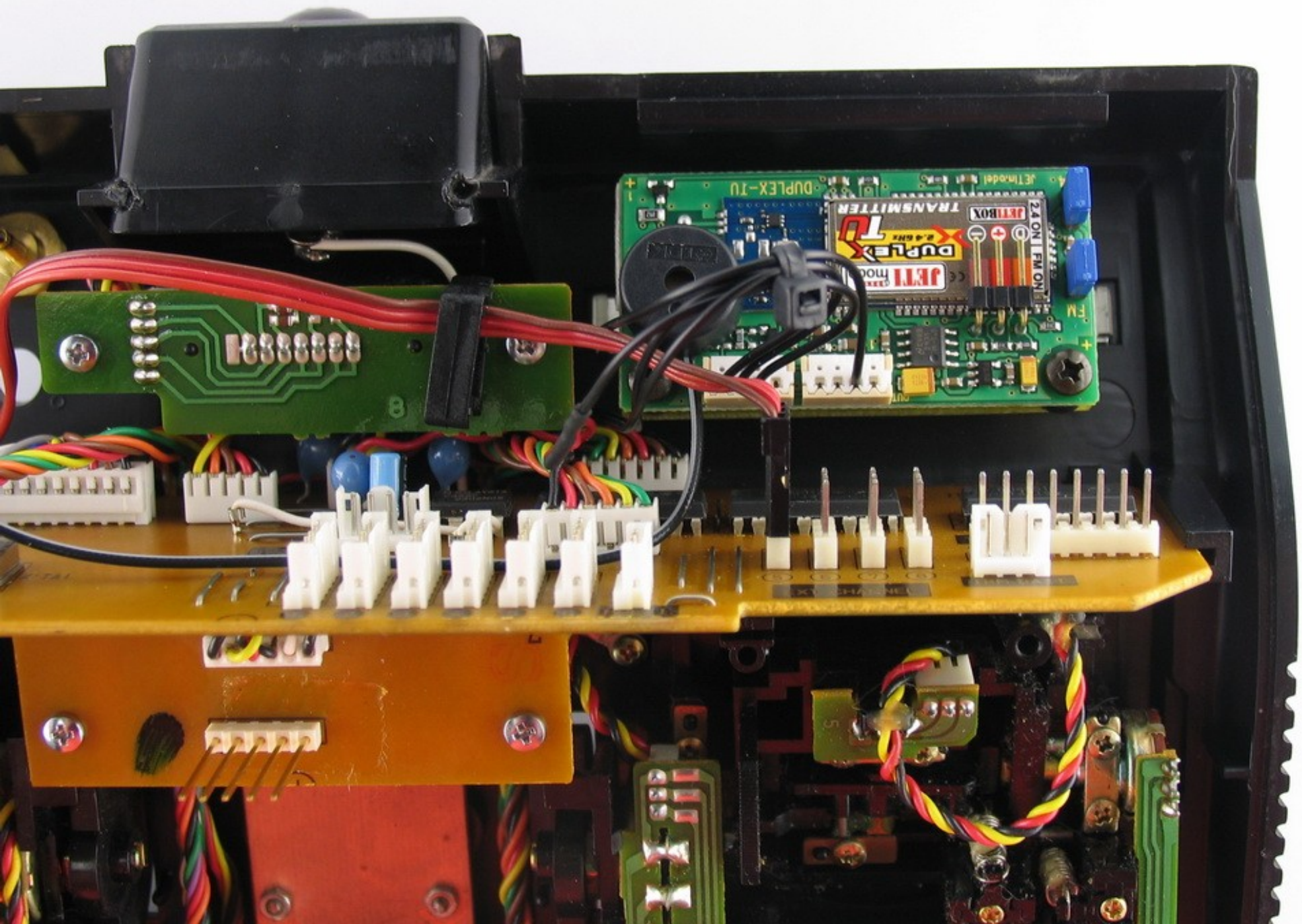
JETIBOX

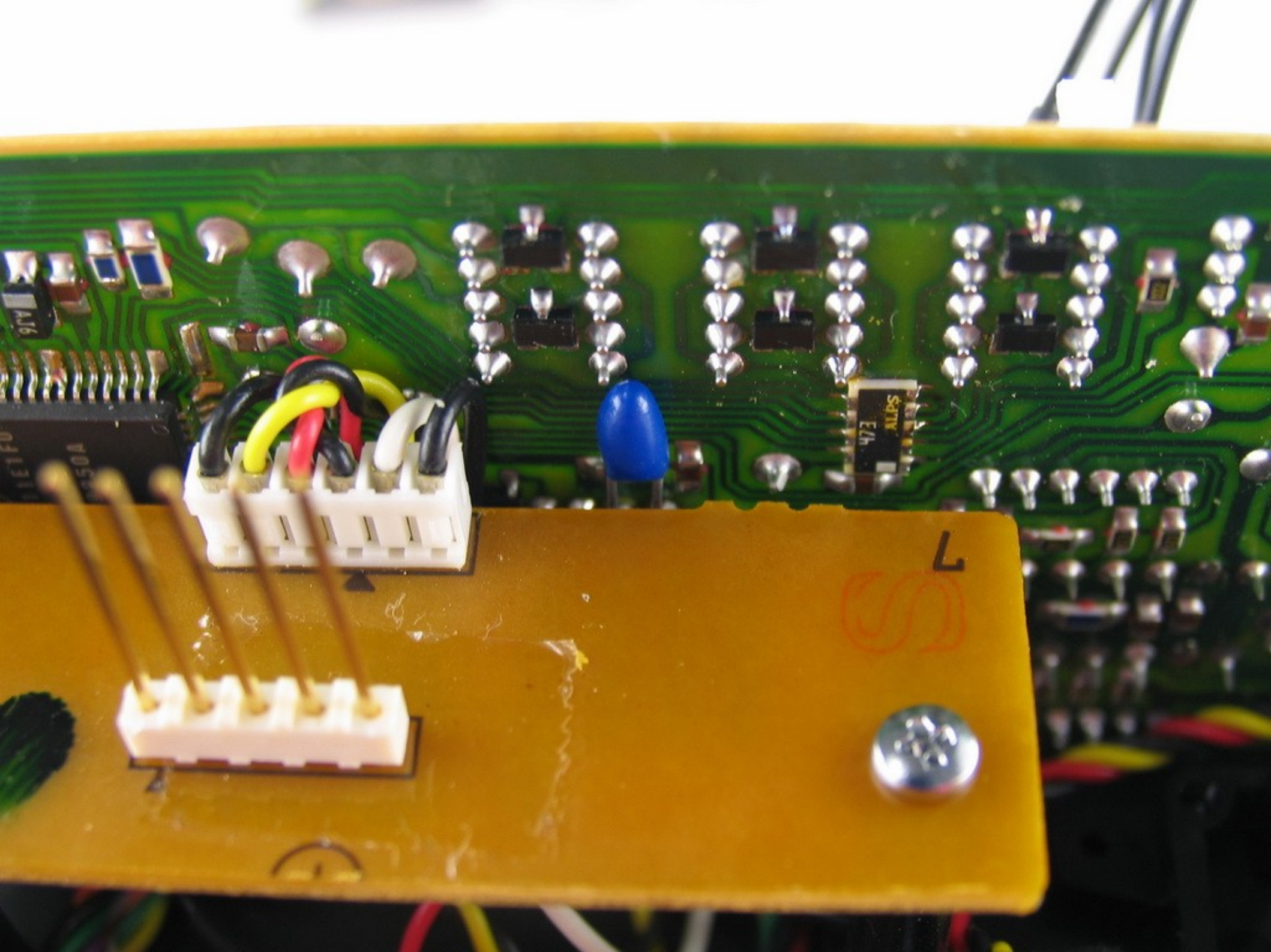
TRANSMITTER

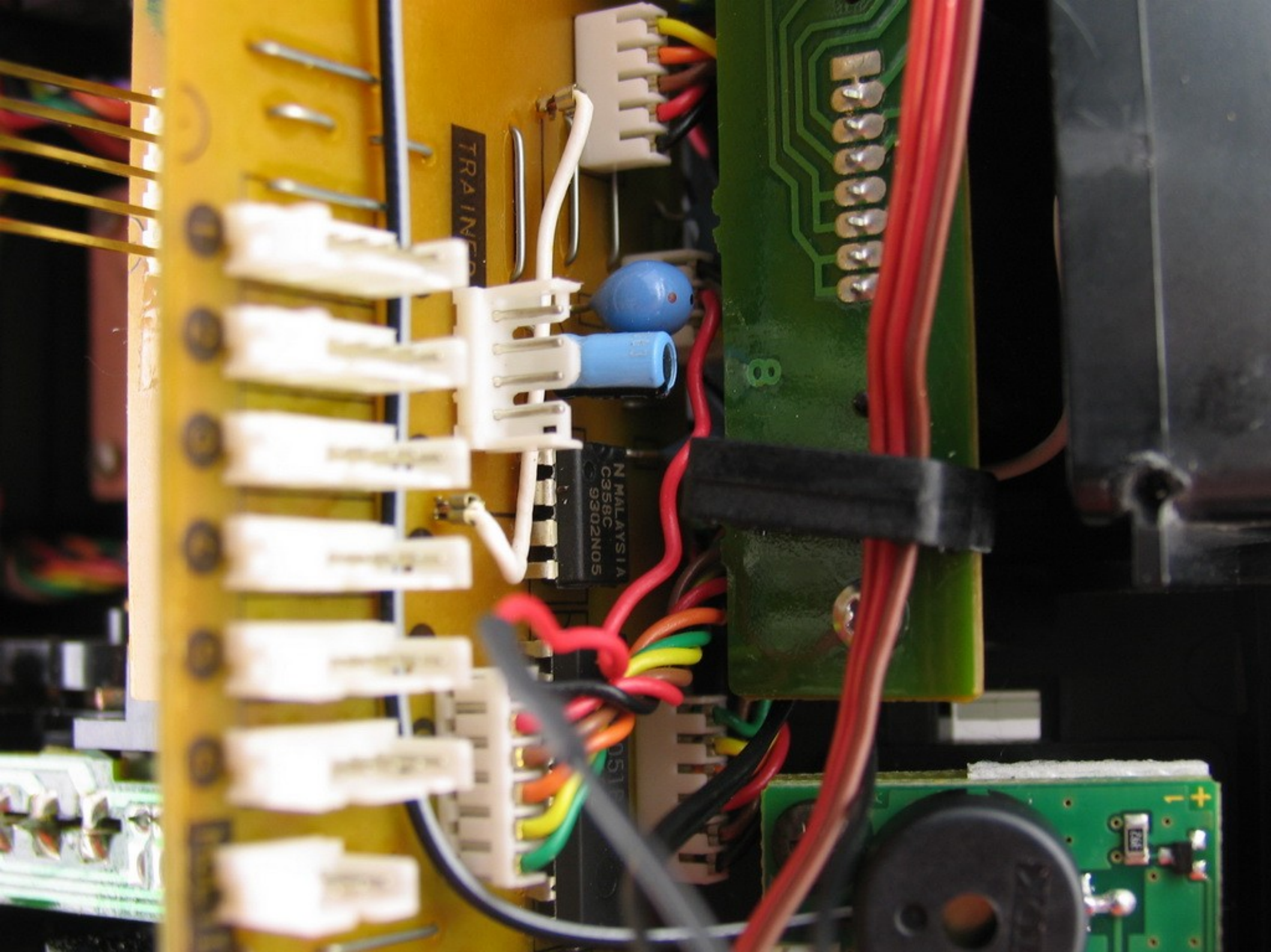
TDK

2.4 • JETI model

DUPLEX-TU







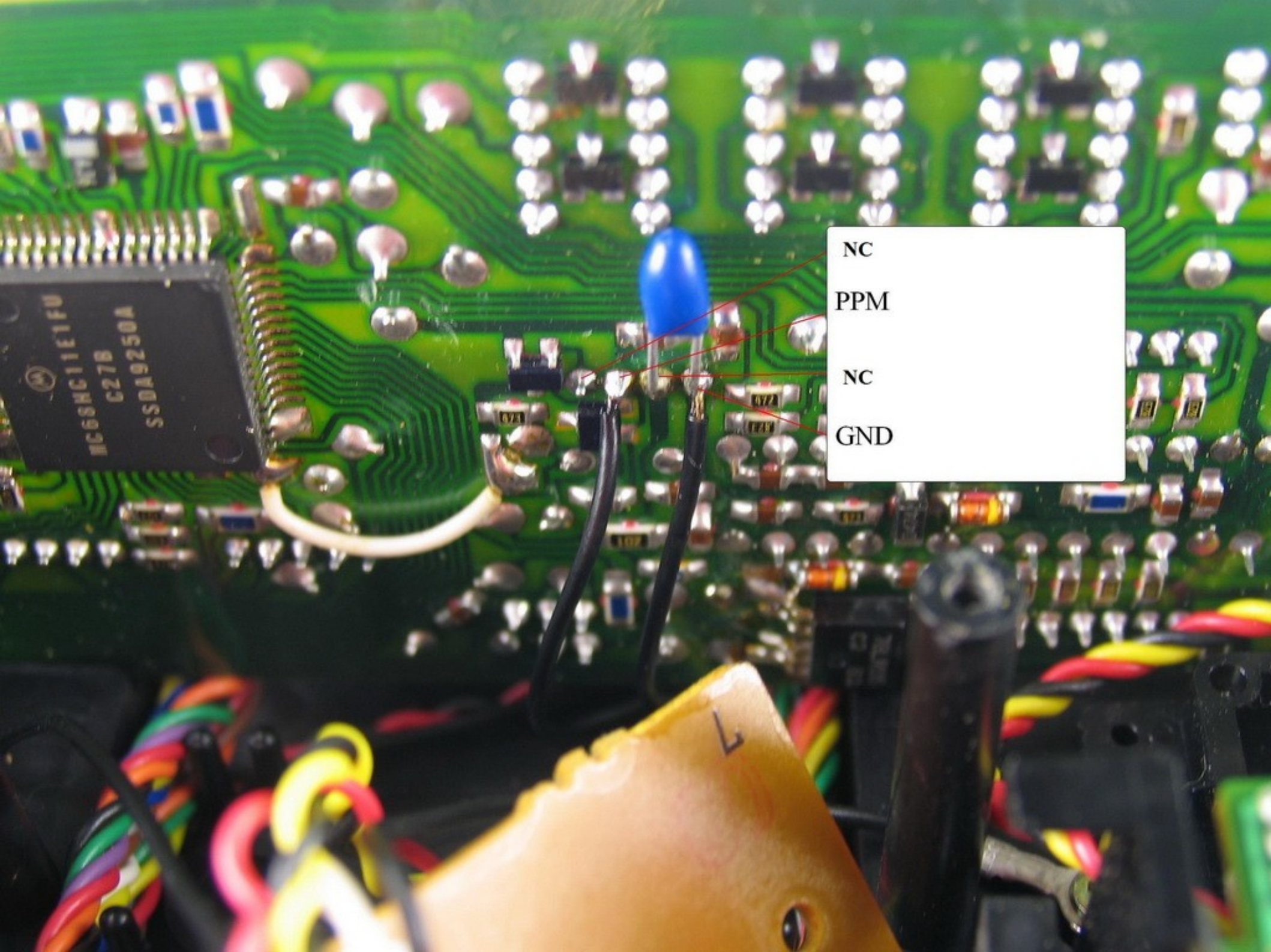
TRAINING

N MALAYSIA
C358C
9302N05

8

244

+



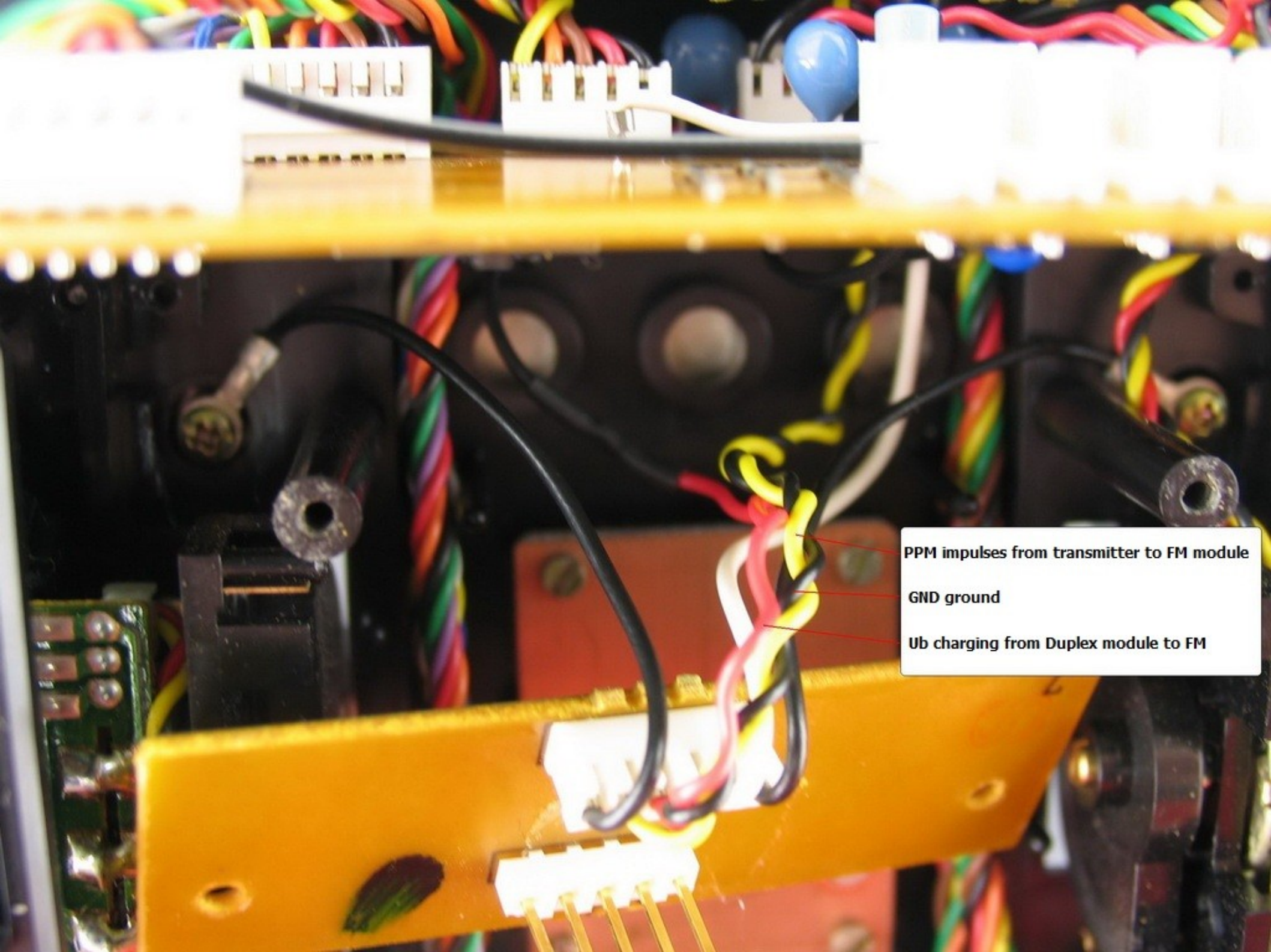
NC

PPM

NC

GND

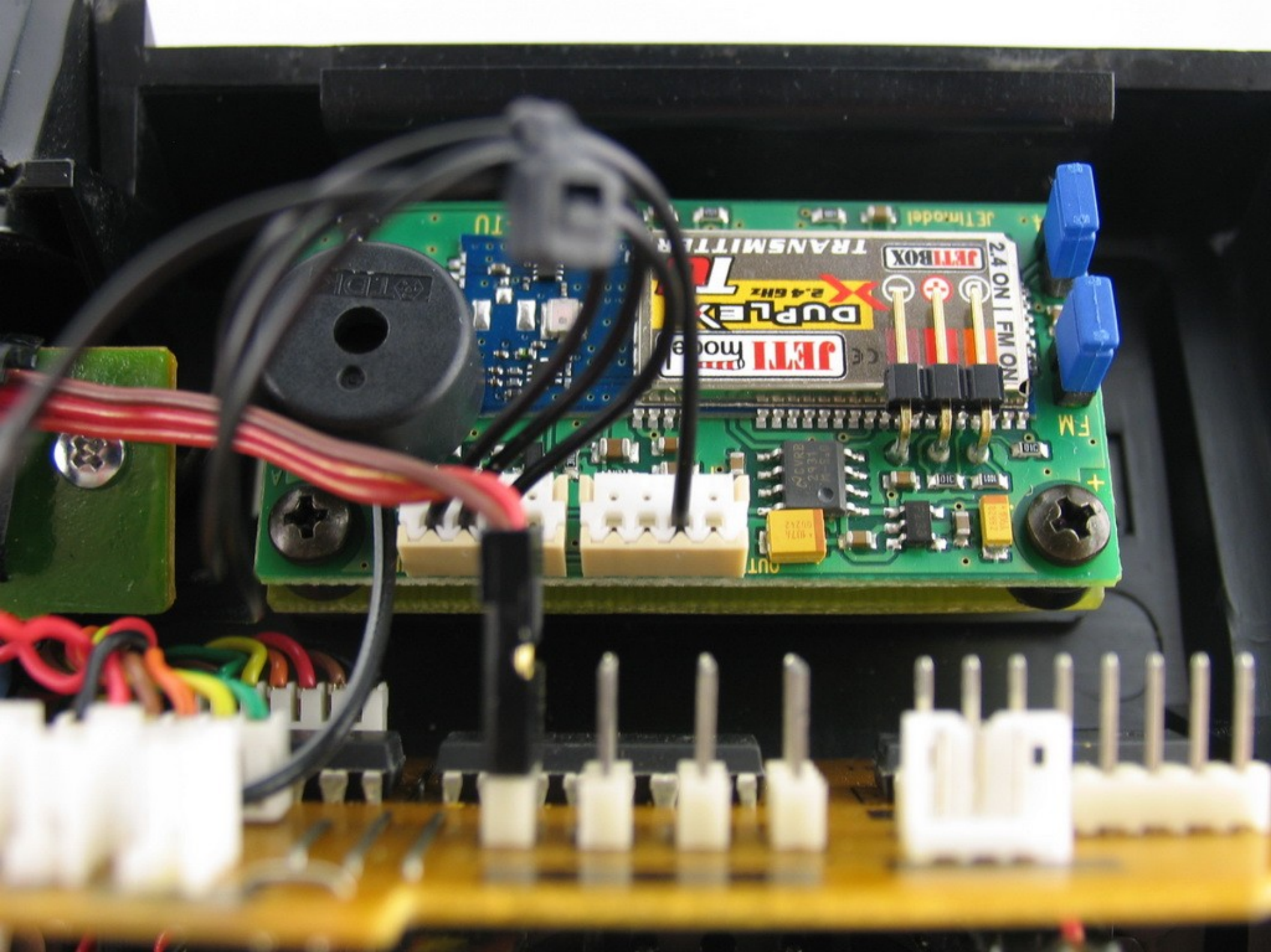
HC66HC11E1FU
C27B
SSDA9250A

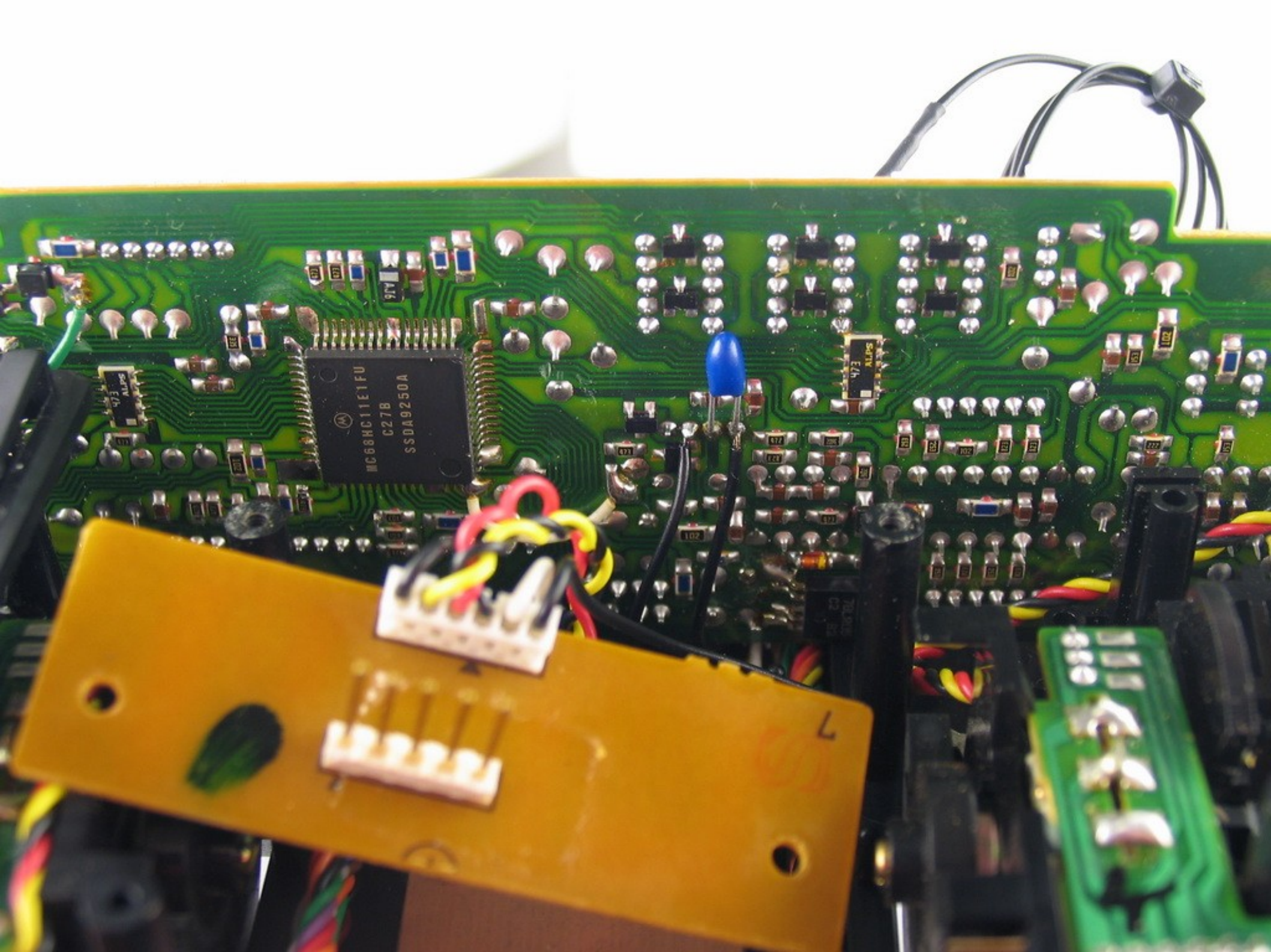


PPM impulses from transmitter to FM module

GND ground

Ub charging from Duplex module to FM





MC68HC11E1FU
C27B
S5DA9250A

7

The image shows the internal components of a device, likely a remote control or a small electronic controller. A large, cylindrical, red battery is positioned at the bottom. Above it, a green printed circuit board (PCB) is populated with various electronic components, including a black integrated circuit (IC) labeled '3064', several resistors, and a yellow PCB with a white connector. A white legend box is overlaid on the right side of the image, containing three entries: 'BLACK - GND ground', 'RED - U charging +', and 'YELLOW - PPM impulses'. Red lines from the legend box point to the corresponding wires connected to the white connector on the yellow PCB. The device is housed in a black plastic casing.

BLACK - GND ground

RED - U charging +

YELLOW - PPM impulses