

Futaba FX-30



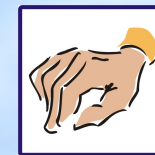
Duplex TU module fits this transmitter well but it is necessary to mount it inside the transmitter. Antenna can be placed to the original place. Transmitter must be switched off during manipulating. It is necessary to solder. Put transmitter on a soft pad to avoid damage.



Switch transmitter off



Turn upside down

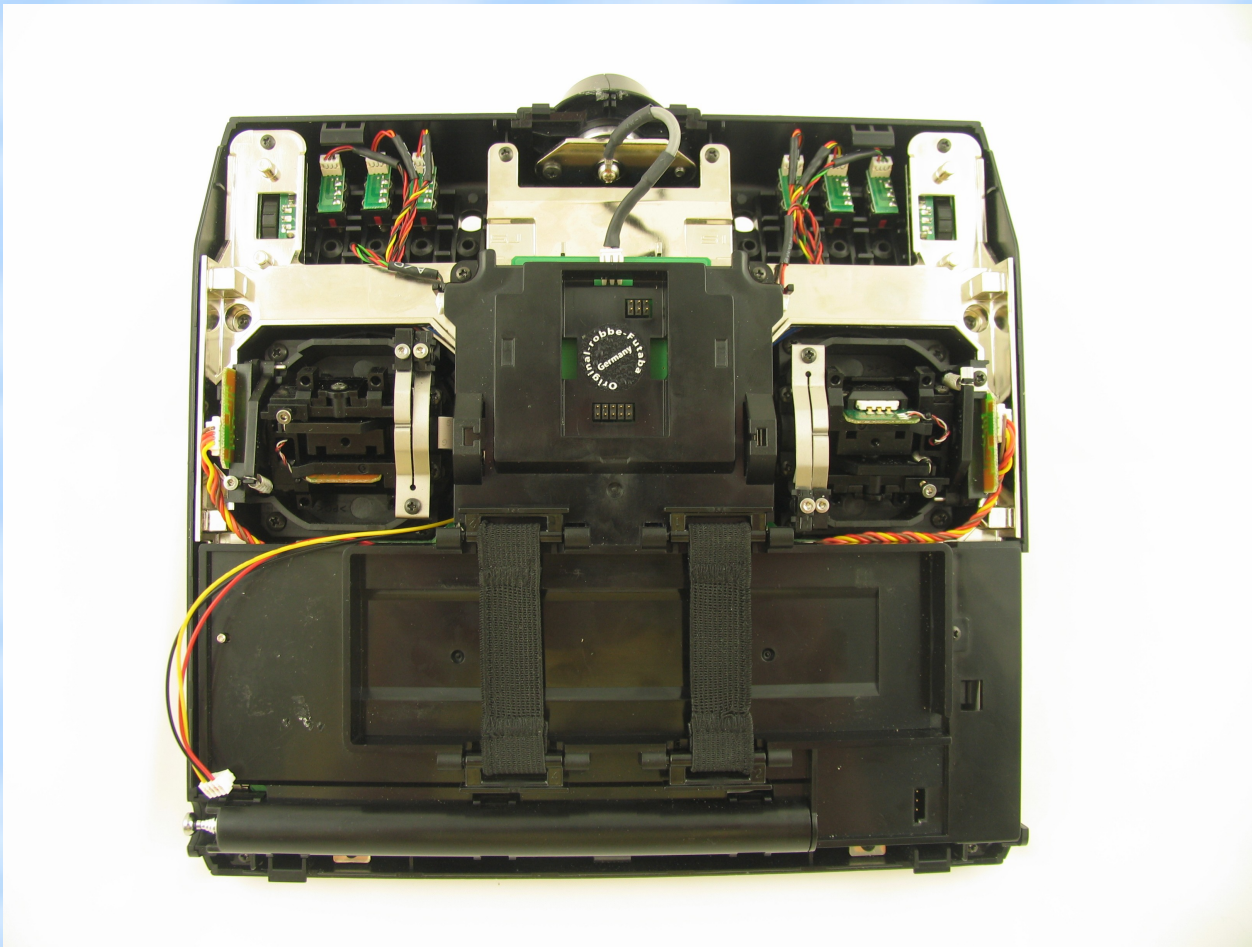


Open rear casing

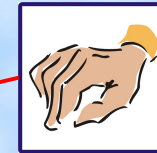
Futaba FX-30



Unscrew original antenna. Choose right position for new antenna and remove rubber stopper in the top of the transmitter. Unscrew five screws that holds black plastic covering and remove it.



Unscrew the antenna



Remove rubber stopper.



Unscrew 5 screws

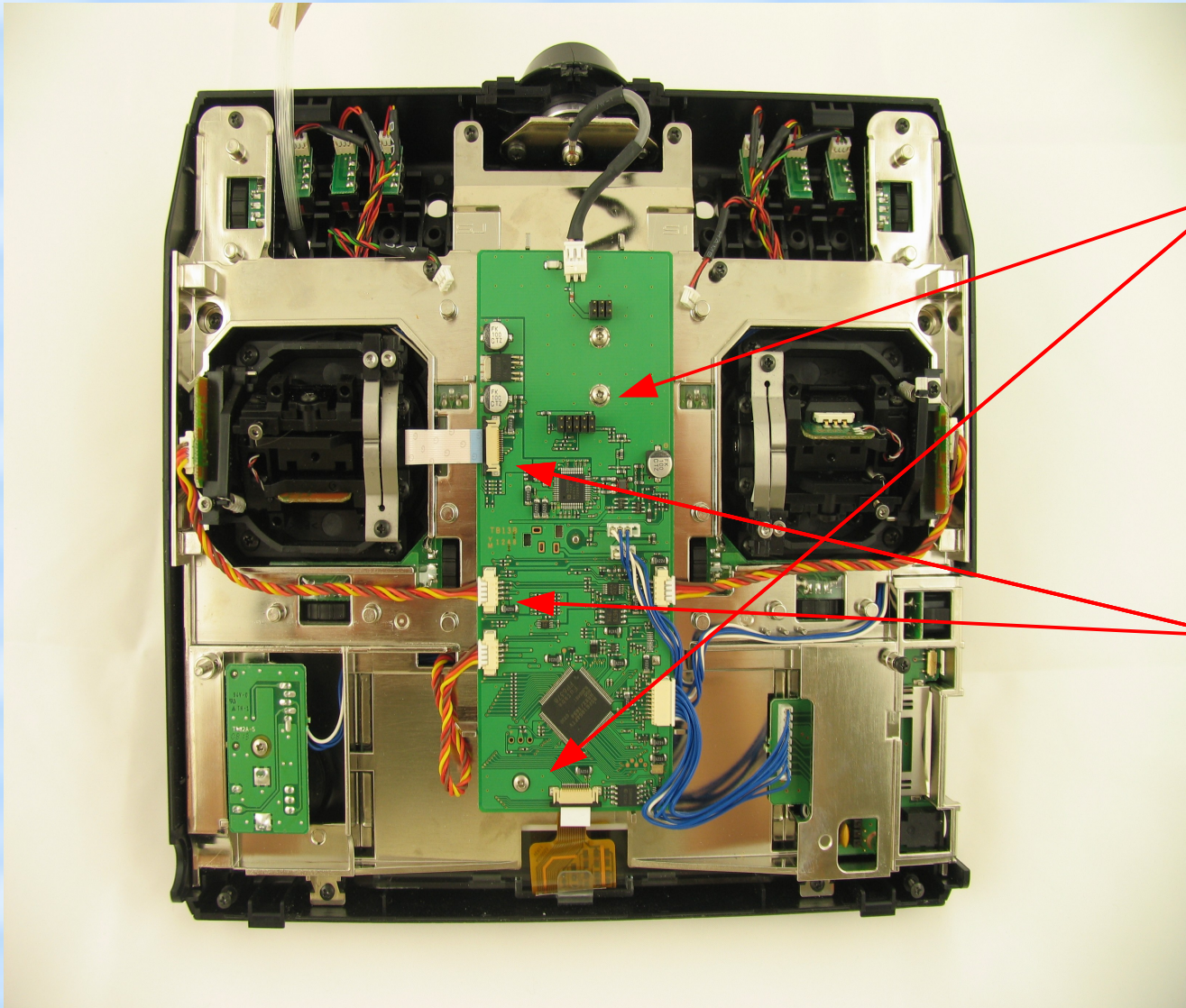


Remove plastic covering

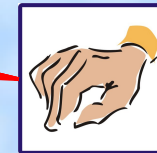
Futaba FX-30



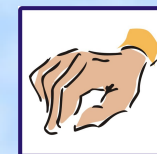
Unscrew 3 screws that holds mainboard. Remove connectors that are on the perimeter of the mainboard carefully so that the mainboard can be turned upside down. Duplex TU module package contains connecting cable. Cut connector at one side of the cable.



Unscrew 3 screws



Disconnect connectors on the perimeter of the mainboard

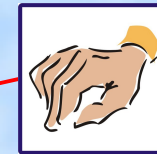
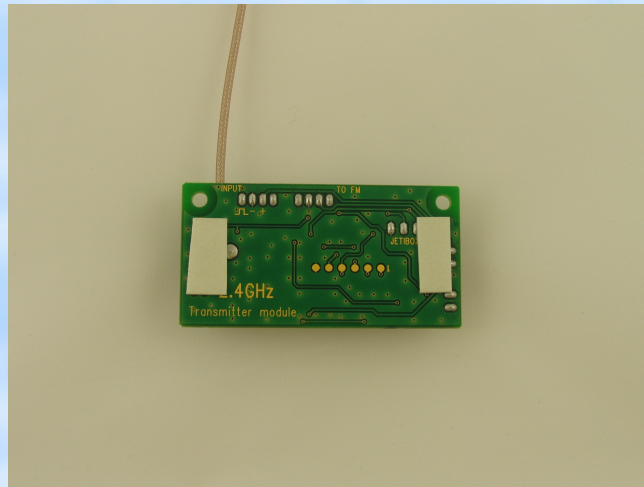


Cut one connector

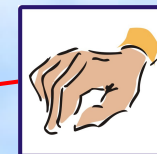
Hitec Eclipse 7



Stick double-sided tape on the Duplex TU module. It is necessary to modify the antenna connector as shown on a picture. Be careful not to overheat the connector during grinding.



Stick double-sided tape

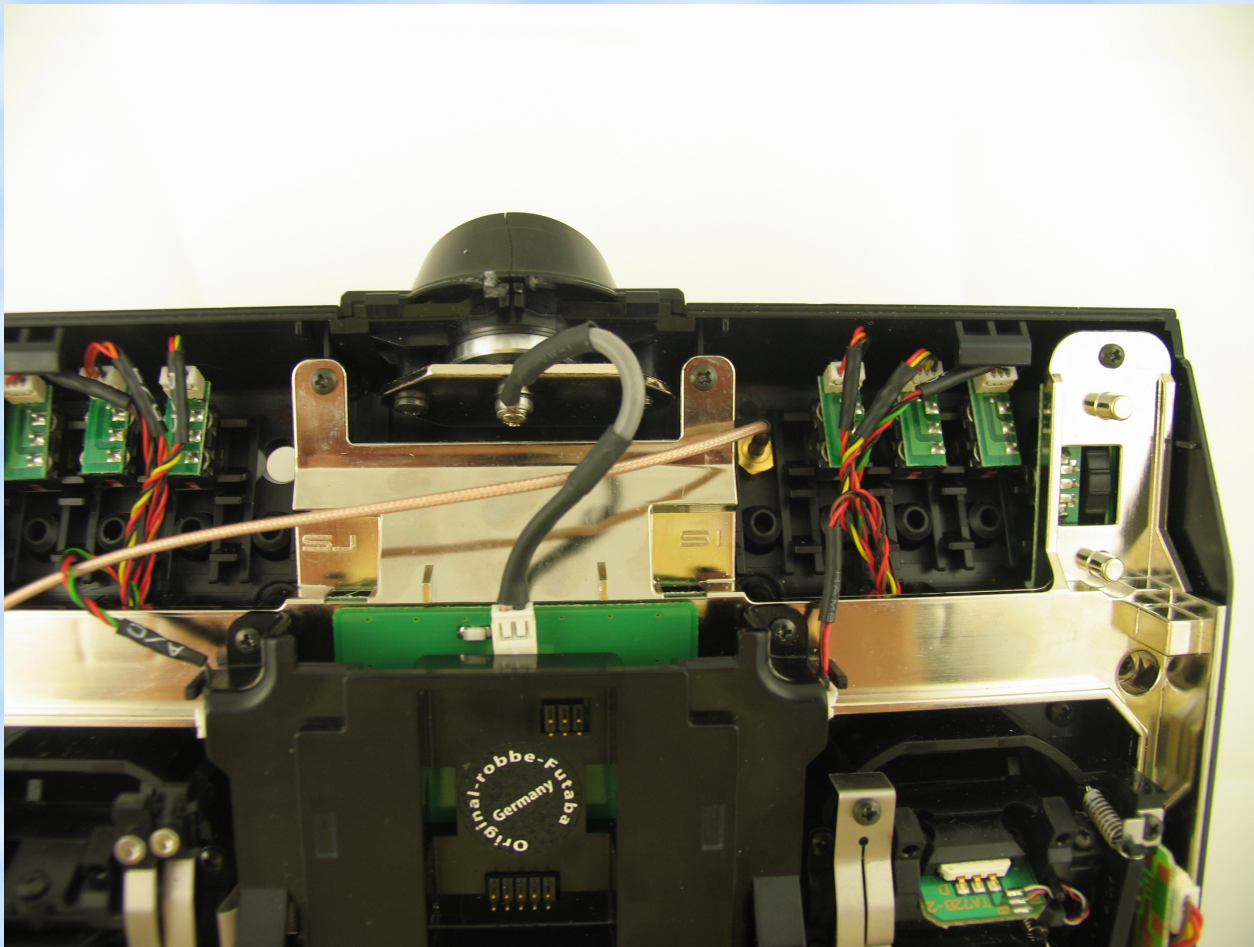


Modify the antenna connector

Futaba FX-30



Unscrew the nut and washer from the connector, put the connector through out from the transmitter. Put antenna connector through prepared hole out from the transmitter, put washer and screw from outside and screw it.



Put antenna connector through out from the transmitter



Put on plastic part

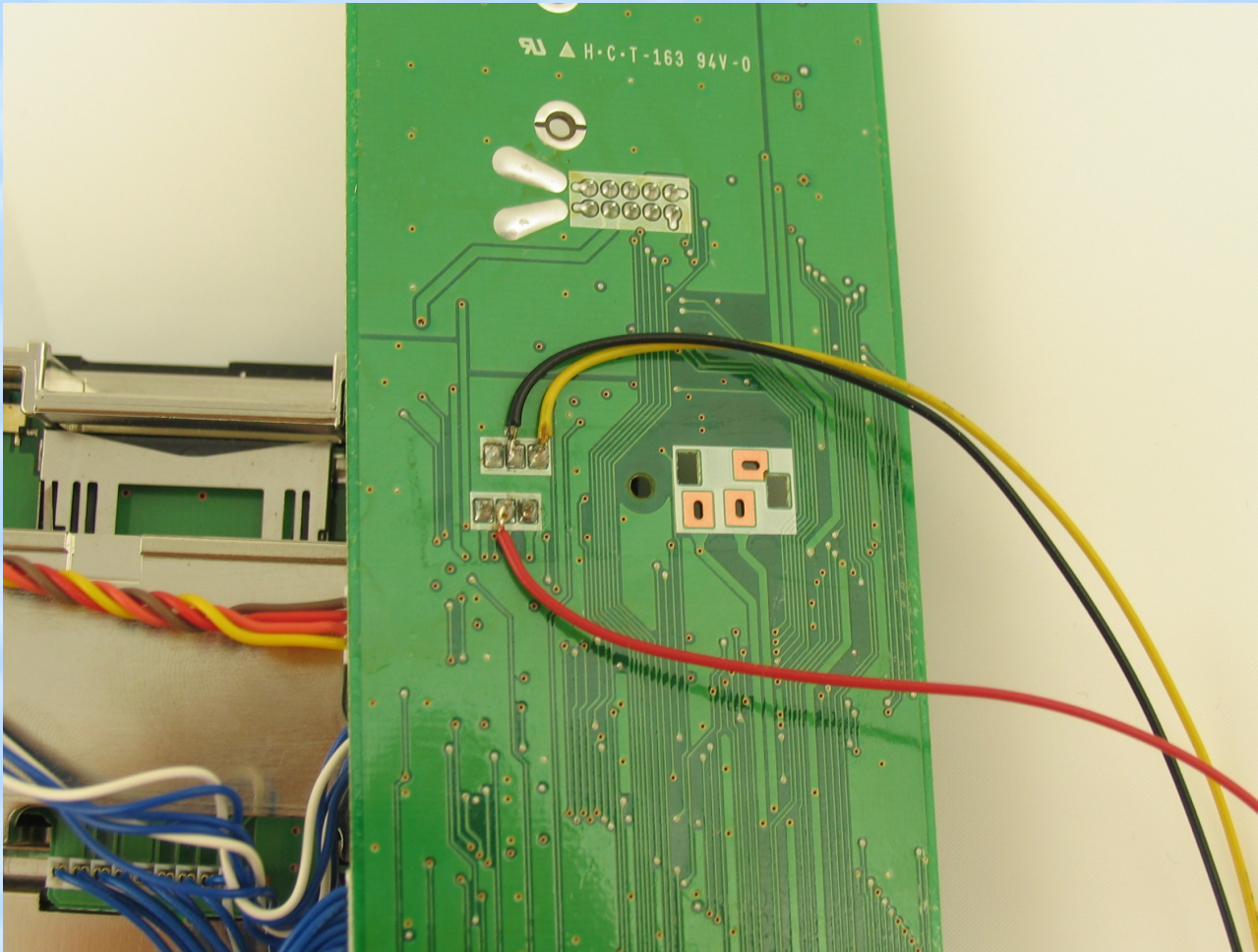


Screw the nut

Futaba FX-30



Solder prepared connecting cable to the board of the transmitter properly as show on a picture. Be sure that soldered connections are not too high because there is not enough free space between board and plastic covering.



Solder the cable to the board

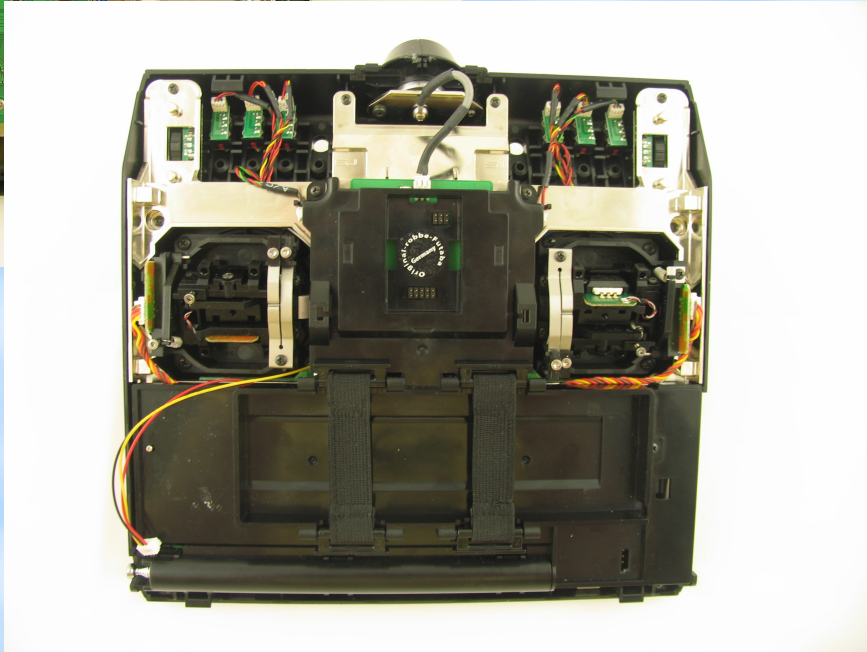
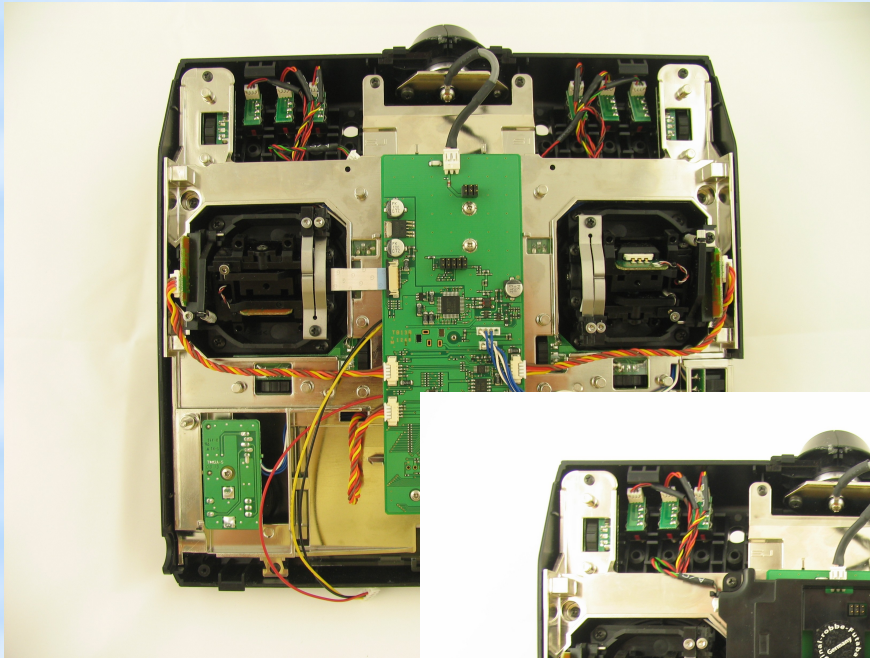


Screw 2.4 GHz antenna

Futaba FX-30



Put the mainboard back to the transmitter carefully and screw it with 3 screws. Adjust the cables that go under the board so that they don't cross each other. Connect all the connectors back to the board. Be sure that the board is not deflected. Put on black plastic covering and screw it with 5 screws.



Put the board back to the transmitter



Screw the board with 3 screws

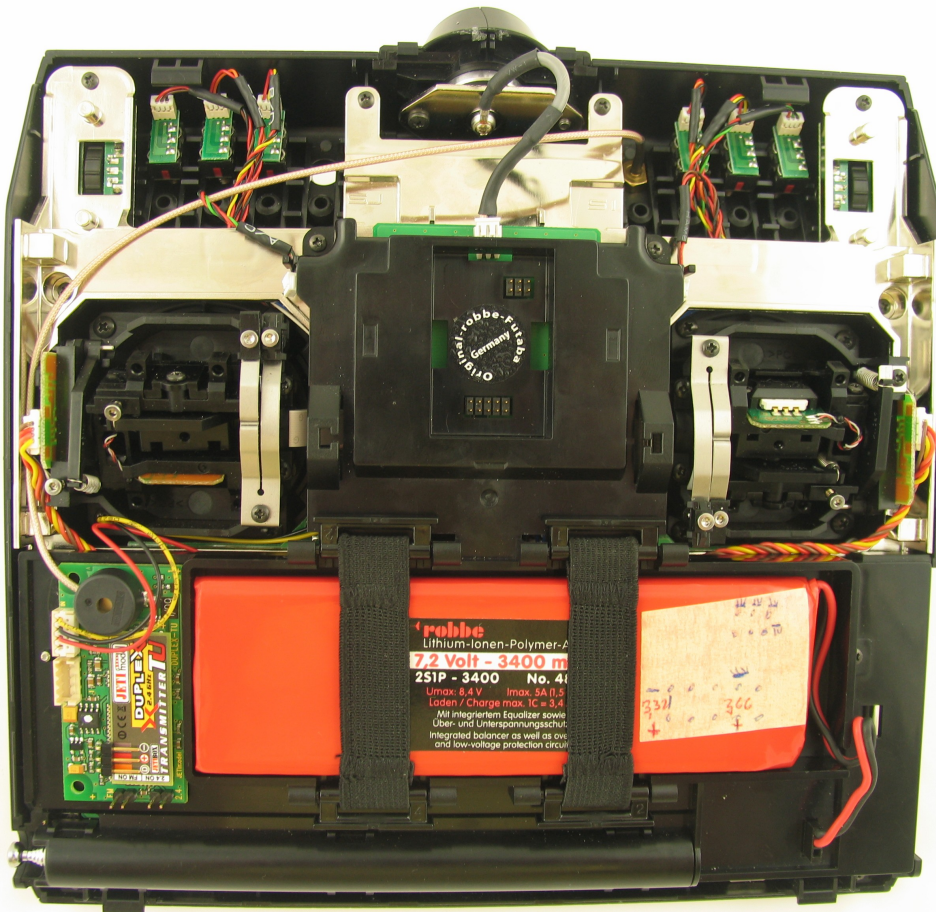


Put on black covering and screw it

Futaba FX-30



Remove paper covering from the double-sided sticky tape and stick Duplex TU module to the right place as shown on a picture. Connect cable that goes from the transmitter to the Duplex TU module to IN connector (Input). Insert batteries and connect it to the transmitter.



Stick Duplex TU module to the transmitter



Connect batteries

Futaba FX-30



Incase the transmitter with reverse procedure see page 1. Screw enclosed antenna. Installation is completed. Before using it is necessary to pair off new receiver and transmitter, see receiver manual.



Mount rear casing



Screw 2.4 GHz antenna