

Futaba FC-16



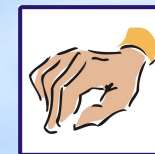
DUPLEX TU fits this transmitter well. It is recommended to use plastic part from assembly kit FC16 to mount the antenna or to drill small hole to the proper place. Transmitter must be switched off during manipulation. Put the transmitter on a soft pad to avoid damage.



Switch off the transmitter!



Turn upside down



Unlock plastic locks

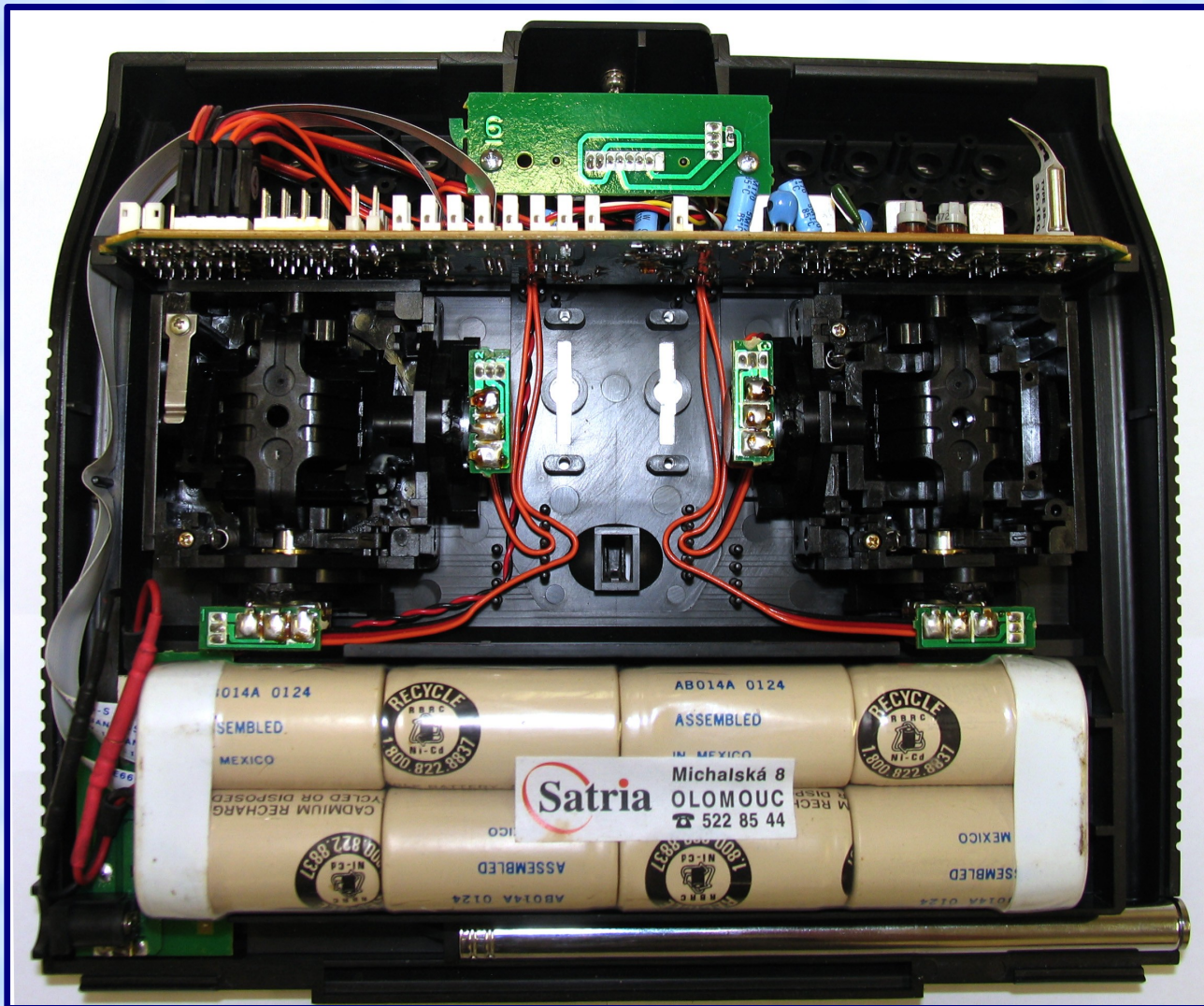


Open rear casing

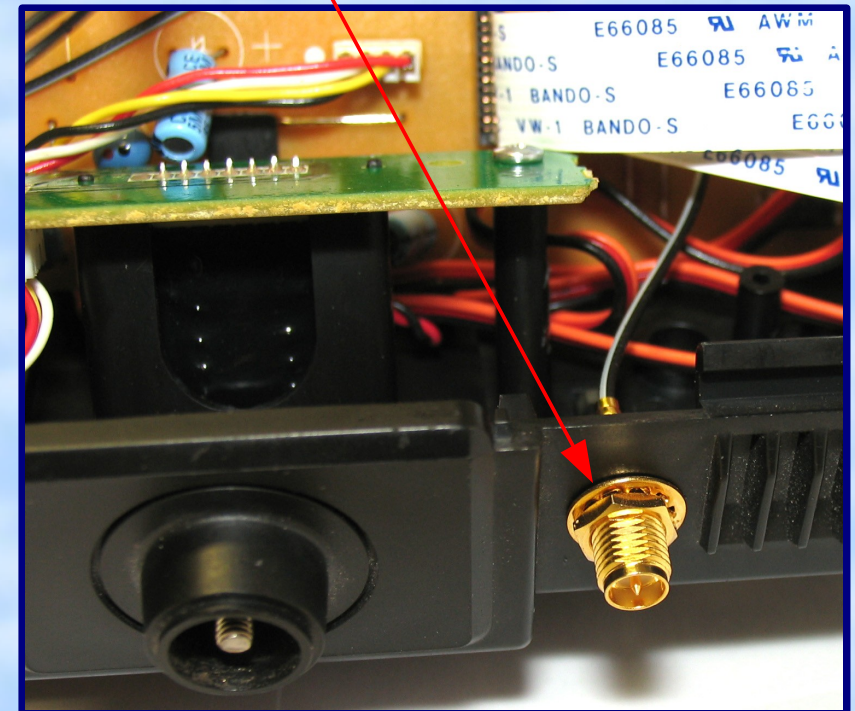
Futaba FC-16



Drill 6 mm hole to the proper place for mounting the antenna. Be carefull not to damage transmitter inside. If you need to mount 2.4GHz antenna to the original place of FM antenna, it is possible to you plastic part from FC16 assembly kit. In this case drill hole with diameter of FM antenna to the centre.



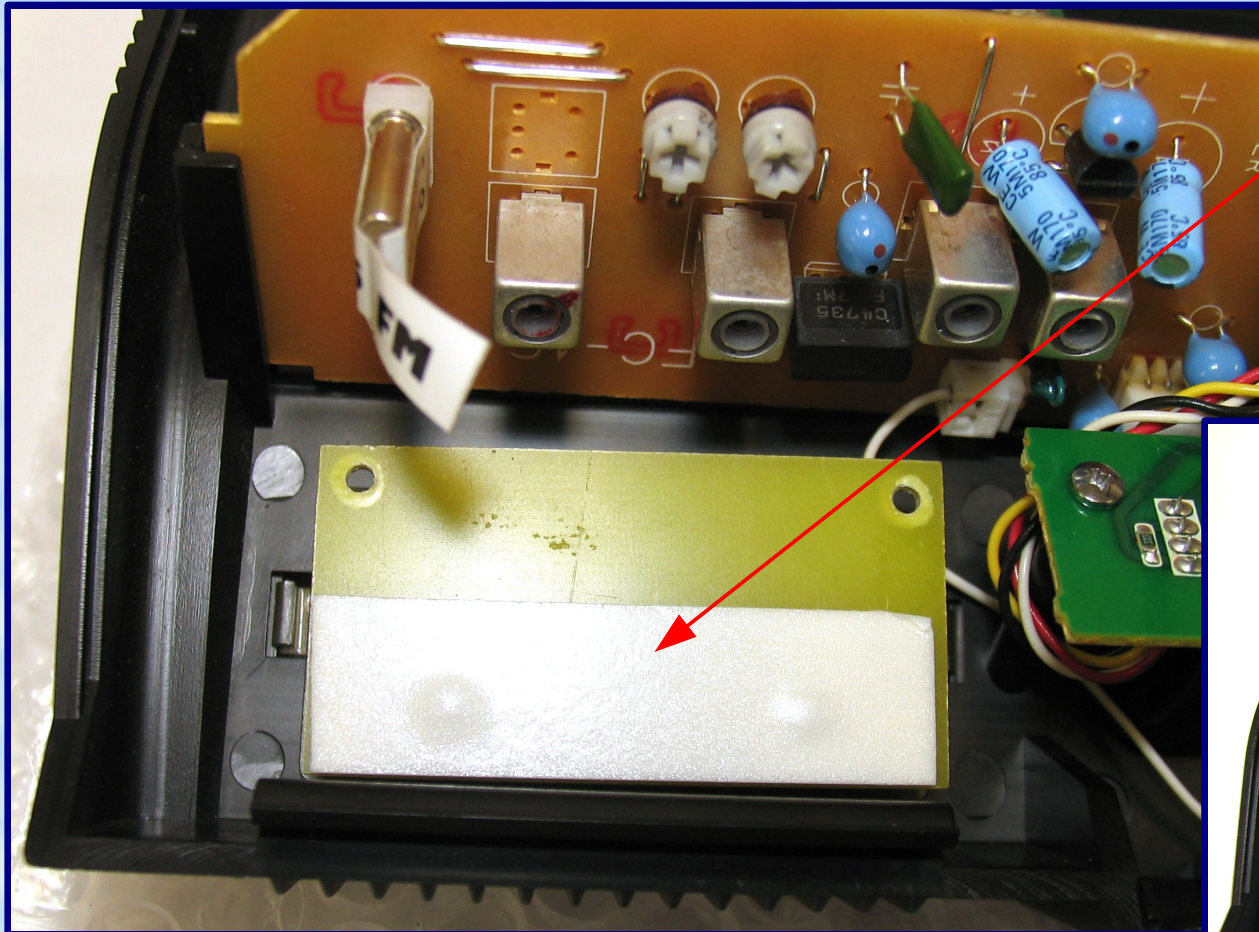
Drill 6mm hole



Futaba FC-16



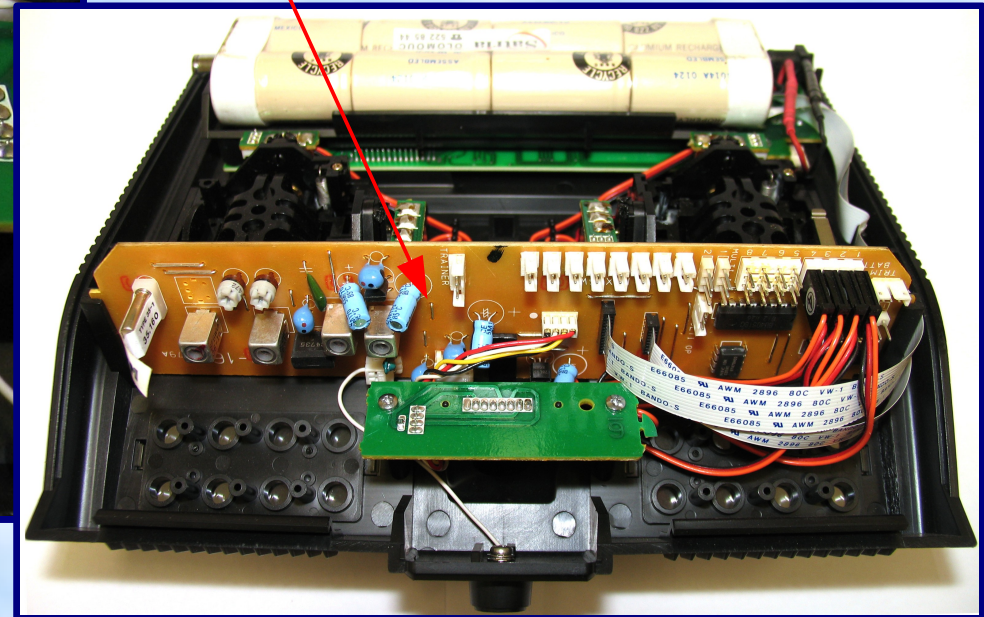
It is advisable to use carrier board and mount TU module to it because spacing of holes doesn't fit required proper mounting. This transmitter has encoder and transmitting FM module at common board. It is necessary to unsolder the patch cord under the connector (Trainer) to switch off the transmitting FM module. This cuts off the power supply of FM module.



Drill two 2mm holes to the carrier board



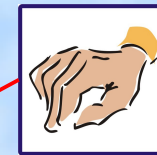
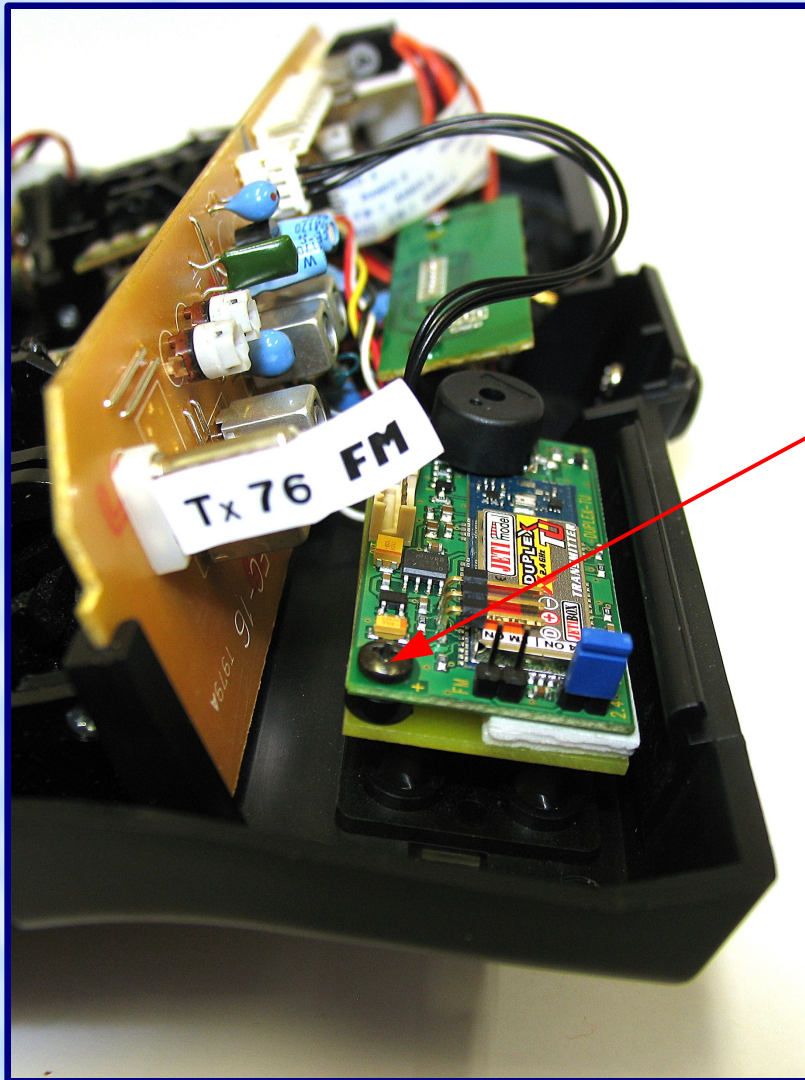
Unsolder the patch cord



Futaba FC-16



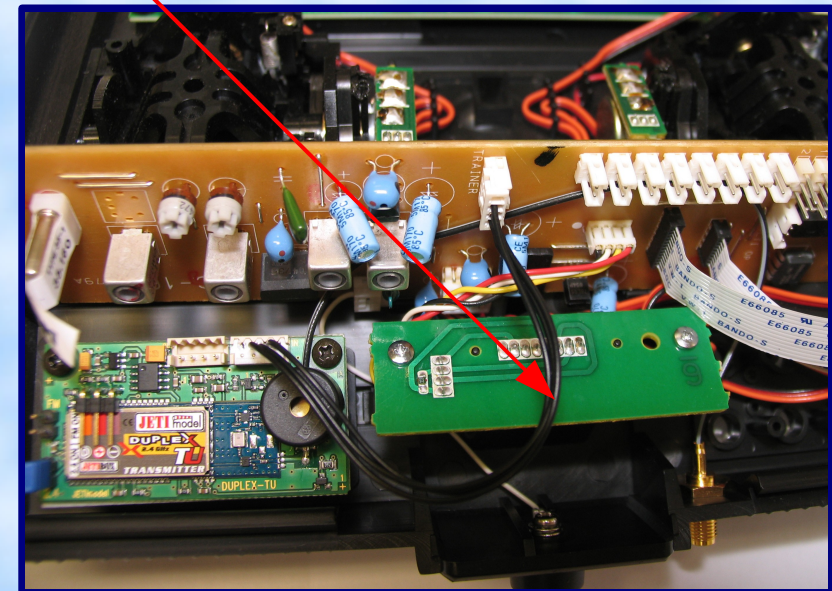
FC16 assembly kit contains 2 screws, 2 distance bars and 2 washers. Use two-sided sticky tape to mount TU module to the carrier board. Use electric cable from assembly kit to connect TU module and the transmitter. Connect it to the input connector (IN) of TU module and to the connector (Trainer) of the transmitter.



Screw the module



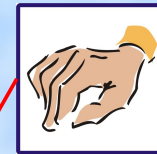
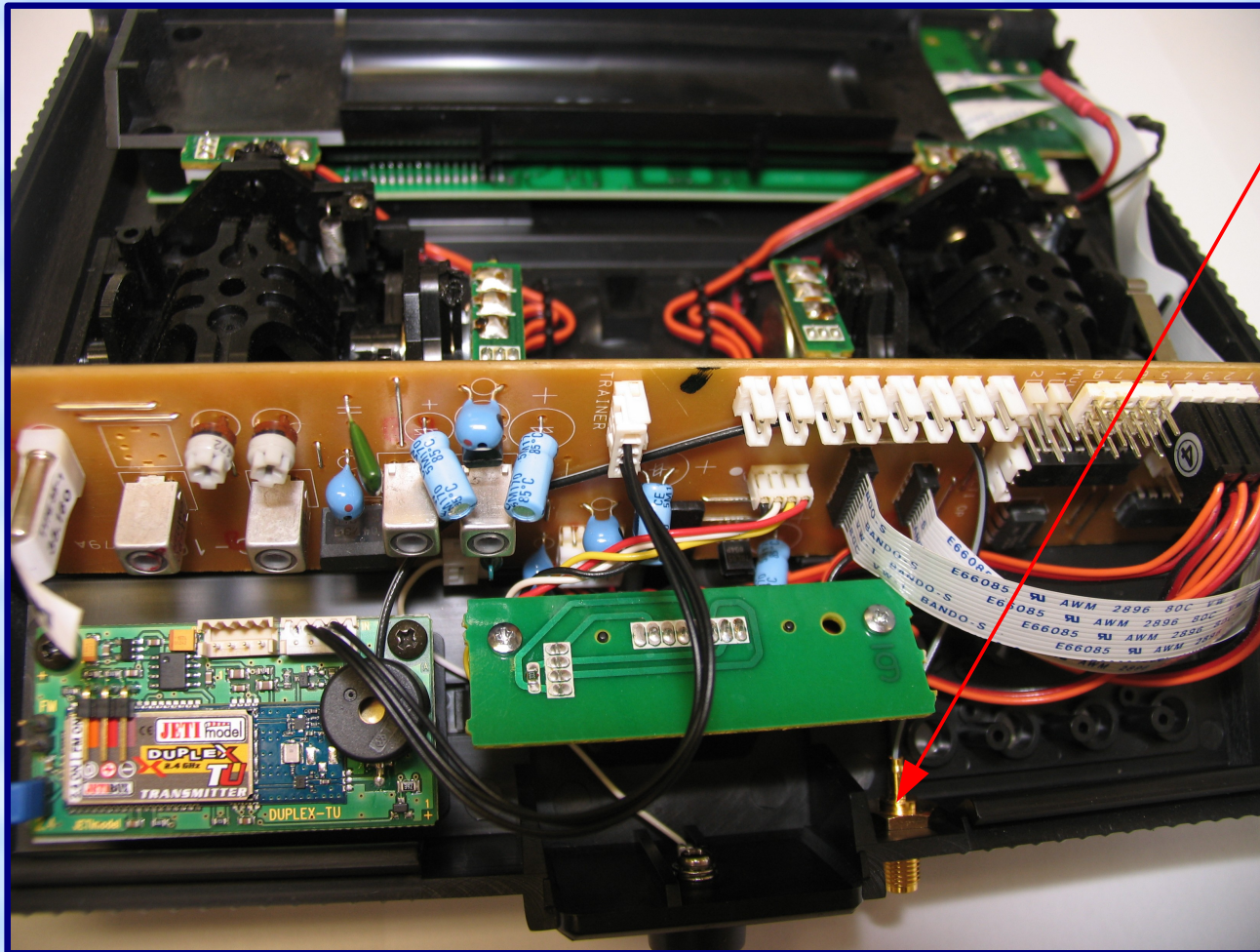
Connect TU module with transmitter



Futaba FC-16



• Unscrew nut and washer from the antenna connector, put the connector through out from the transmitter, insert the washer and screw the nut. Be carefull of antenna cabel in order not to block mechanical parts of transmitter or not to get broken because of excessive bend. Incase the transmitter with reverse procedure see page 1.



Screw antenna connector

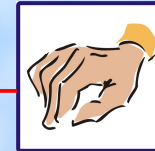


Incise the transmitter

Futaba FC-16



Screw enclosed antenna. Installation is completed. Before using it is necessary to pair off new receiver and transmitter, see receiver manual.



Screw the antenna